

Clarke®



6V/12V 1A BATTERY CHARGER/MAINTAINER
MODEL NO: BC1
PART NO: 6267022

OPERATION & MAINTENANCE INSTRUCTIONS



ORIGINAL INSTRUCTIONS

DL1025

INTRODUCTION

Thank you for purchasing this CLARKE Battery Charger.

Please read this manual thoroughly, before attempting to operate this product and carefully follow all instructions given.

It is vitally important that ALL precautions are taken, as specified, which will not only provide protection for yourself and that of others around you, but will also ensure that the battery charger will give you long and satisfactory service.

GUARANTEE

This CLARKE product is guaranteed against faulty manufacture for a period of 12 months from the date of purchase. Please keep your receipt as proof of purchase.

This guarantee is invalid if the product is found to have been abused or tampered with in any way, or not used for the purpose for which it was intended.

Faulty goods should be returned to their place of purchase, no product can be returned to us without prior permission.

This guarantee does not effect your statutory rights.

ENVIRONMENTAL RECYCLING POLICY



Through purchase of this product, the customer is taking on the obligation to deal with the WEEE in accordance with the WEEE regulations in relation to the treatment, recycling & recovery and environmentally sound disposal of the WEEE.

■ In effect, this means that this product must not be disposed of with general household waste. It must be disposed of according to the laws governing Waste Electrical and Electronic Equipment (WEEE) at a recognised disposal facility.

SPECIFICATIONS

Model Number	BC1
Operating Voltage and Frequency	230 V, 50Hz
Battery Charging Voltages:	6V & 12V
Maximum Input Power	20W
Start Voltage	3.5V
Charging Current	6V: 1A, 12V: 1A
Charging Steps	6 steps
Charging Time	1 Hour per Amp: 4 Hours for 4Ah Battery 10 Hours for 10Ah Battery 20 Hours for 20Ah Battery 40 Hours for 40Ah Battery
Min./Max. Charging Battery Size	4Ah up to 30Ah
IP Rating	IP65
Operating Temperature Range	0°C to 40°C (32°F to 104°F)
Dimensions (L x W x H)	150mm x 60mm x 40mm
Power Cable Length	1.55m
Power Cable Plug Fuse	3A
Charging Clamp Cable Length	1.20m to Connection Plug + 35cm to Clamps/ Ring Terminals
Ring Terminal Cable Fuse	15A
Weight	400g

SAFETY PRECAUTIONS









WARNING: ALWAYS SWITCH OFF THE CHARGER WHEN CONNECTING OR DISCONNECTING LEADS TO AVOID SPARKING AS HIGHLY INFLAMMABLE HYDROGEN GAS CAN BE RELEASED IN THE PROCESS OF BATTERY CHARGING

PLEASE READ BEFORE USING THIS UNIT

1. **DO NOT** use this charger/maintainer on Lithium Ion batteries.
2. Batteries can generate explosive gases during normal operation. **ALWAYS** use in well ventilated area.
3. **DO NOT** smoke, strike a match or cause a spark in the vicinity of the battery or engine. Avoid explosive gas, flames and sparks.
4. Remove all personal jewellery, such as rings, bracelets, necklaces and watches while working with a vehicle battery. These items may produce a short circuit and could cause severe burns.
5. Be extra cautious to reduce the risk of dropping a metal tool onto the battery. It may spark or short circuit the battery or other electrical hardware which may cause an explosion or fire.
6. Wear complete eye protection, hand and clothing protection. **AVOID** touching eyes while working near a battery.
7. Study all battery manufacturers specific precautions, such as removing or not removing cell caps while charging and recommended rates of charge.
8. Clean battery terminals before connection with the charger. If there is corrosion on the terminals, **AVOID** eye contact.
9. When it is necessary to remove the battery from the vehicle to charge, **ALWAYS** remove grounded terminal from the battery first. Make sure all accessories in the vehicle are switched off in order to prevent an arc.
10. This charger is **NOT** intended to supply power to an extra low voltage electrical system or to charge dry cell batteries. Charging dry cell batteries may cause the battery to burst and cause injury to person or property.
11. **NEVER** charge a frozen, damaged, leaking or non rechargeable battery.
12. If battery electrolyte contacts skin or clothing, wash **IMMEDIATELY** with soap and water. If electrolyte enters your eye, **IMMEDIATELY** flood eye with running clean cold water for at least 15 minutes and seek medical attention immediately.
13. **DO NOT** place the charger in the engine compartment, near moving parts or near the battery. Place as far away from them as the cable permits.

14. **NEVER** place the charger directly above the battery being charged, gases or fluids from the battery will corrode and/or damage the charger.
15. **DO NOT** cover the charger while charging.
16. **DO NOT** expose to rain or wet conditions.
17. Connect and disconnect the DC output connections only after disconnecting the charger from the mains power supply.
18. Use of an attachment not recommended or sold by the manufacturer may result in a risk of fire, electric shock or injury to persons.
19. **DO NOT** overcharge batteries by selecting the wrong charge mode.
20. To reduce the risk of damage to the electric plug and cord, pull by the plug rather than the cord when disconnecting charger from mains power supply.
21. To reduce risk of electric shock, unplug charger from mains power supply before attempting any maintenance or cleaning.
22. Operate with caution if the charger has received a direct hit of force or been dropped. Have it checked and repaired if damaged.
23. **NEVER** attempt any repairs yourself. If you have a problem with your charger contact your local CLARKE dealer or contact service@clarkeinternational.com
24. When charging is complete, ensure that the vehicle battery leads are secured to the proper terminals which should be clean, and lightly smeared with petroleum jelly to prevent corrosion. Finally, re-check the electrolyte level.

SAFETY SYMBOLS

	Before Use, Read The Instructions Fully		For Indoor Use Only
	Class II Appliance		Wear Eye Protection
	Wear a Protective Mask		Wear Protective Gloves

ELECTRICAL CONNECTIONS



WARNING! READ THESE ELECTRICAL SAFETY INSTRUCTIONS THOROUGHLY BEFORE CONNECTING THE PRODUCT TO THE MAINS SUPPLY.

Before switching the product on, make sure that the voltage of your electricity supply is the same as that indicated on the rating plate. This product is designed to operate on 230VAC 50Hz. Connecting it to any other power source may cause damage.

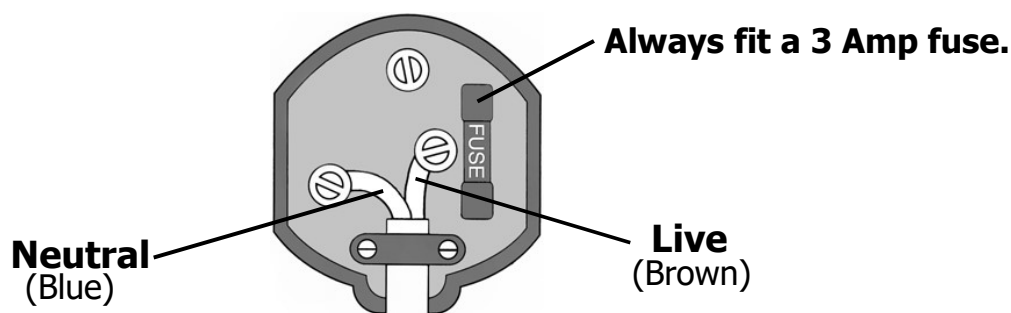
This product may be fitted with a non-rewireable plug. If it is necessary to change the fuse in the plug, the fuse cover must be refitted. If the fuse cover becomes lost or damaged, the plug must not be used until a suitable replacement is obtained.

If the plug has to be changed because it is not suitable for your socket, or due to damage, it should be cut off and a replacement fitted, following the wiring instructions shown below. The old plug must be disposed of safely, as insertion into a mains socket could cause an electrical hazard.

If the colours of the wires in the power cable of this product do not correspond with the markings on the terminals of your plug, proceed as follows.

- The **Blue** wire must be connected to the terminal marked **N** or coloured **Black**.
- The **Brown** wire must be connected to the terminal marked **L** or coloured **Red**.

Plug must be BS1363/A approved.



Ensure that the outer sheath of the cable is firmly held by the clamp

We strongly recommend that this machine is connected to the mains supply via a Residual Current Device (RCD)

If in any doubt, consult a qualified electrician. **DO NOT** attempt any repairs yourself.



This symbol indicates that this is a Class II product, and does not require an earth connection.

OVERVIEW



1	Battery Charger Unit	5	Charging Clamp Negative (Black)
2	LED Indicator Light	6	Charging Ring Terminal Positive (Red)
3	Power Cable	7	Charging Ring Terminal Negative (Black)
4	Charging Clamp Positive (Red)	8	15A Fuse

PREPARATION

1. It may be necessary to remove the battery from a vehicle to charge it.
 - Always remove the grounded terminal from the battery first.
 - Ensure all accessories in the vehicle are switched off to prevent sparking.
2. Clean the battery terminals. Be careful and avoid any corrosive matter from coming in contact with eyes. If corrosive matter enters your eye, immediately flood eye with running clean cold water for at least 15 minutes and seek medical attention immediately.
3. If the battery can be topped up, add distilled water to each cell until the battery acid reaches the level specified by the battery manufacturer. This helps remove unwanted gas from the cell. **DO NOT** overfill. For a battery without cell caps, follow the manufacturer's instructions.
4. Study all the battery manufacturer's specified precautions: for example, removing or not removing cell caps while being charged and recommended rates of charge.
5. Refer to the vehicle manual and battery rating plate to find the voltage of the battery and make sure that the output is set to the correct voltage.
6. If the charger has adjustable charge rate, charge the battery initially at the lowest rate.

CHARGER LOCATION

1. Place the charger as far away from the battery as possible. **NEVER** place the charger on the battery or the battery on the charger.
2. **DO NOT** position the charger above the battery during the charging procedure. Gases from the battery may corrode and damage the charger.
3. **DO NOT** let battery acid drip on the charger when reading a hydrometer for specific gravity or when you fill the battery.
4. **DO NOT** use the charger in an enclosed space with reduced airflow.
5. During charging, if the temperature of the battery exceeds 40°C, the charging current will be reduced. If the temperature exceeds 45°C, the charger will stop. Charging will not recommence until the battery temperature reduces to safe limits.

CORRECT USE



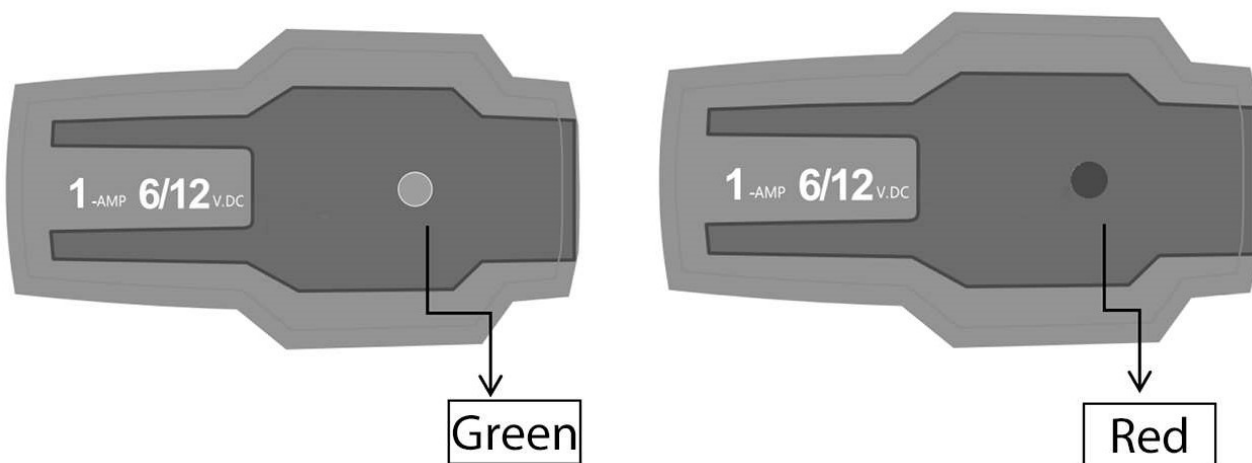
WARNING: NOT SUITABLE FOR LITHIUM ION BATTERY TYPES - ONLY USE ON LEAD ACID BATTERIES

The charger is designed for charging non maintenance free or maintenance free 6V & 12V lead acid batteries and Lead Gel and AGM batteries which are used in motor vehicles. The charger is designed for mobile use only and not for installation in caravans, mobile homes or similar vehicles. The charger cannot be used as a buffer power supply, e.g. while changing a battery. **DO NOT** expose the charger to rain or snow.

The charger is to be used only for its prescribed purpose. Any other use is deemed to be a case of misuse. The user/operator will be liable for any damage or injuries caused as a result of this.

NOTE: Please note that the charger has **NOT** been designed for use in commercial, trade or industrial applications. The warranty will be voided if the charger is used in commercial, trade or industrial businesses or for equivalent purposes.

BATTERY CHARGER DISPLAY INDICATORS



	Indicator Light	Meaning
1	Blinking Green Fast	No Battery Connected/Detected
2	Blinking Green Slow	Charging
3	Green Constantly On	Fully Charged
4	Blinking Red Fast	Error: Short Circuit or Reverse Polarity/Inversely Connected

OPERATION

Before you connect the charger to the power supply, make sure that the data in the specifications are identical to the supply voltage.



WARNING: DO NOT CHARGE ANY FROZEN BATTERIES.

Please refer to the instructions in the owners manual of the vehicle or the battery manufacturers user information before charging any battery.

CHARGING THE BATTERY

1. Release or remove the battery stoppers (if fitted) from the battery.
2. Check the acid level in the battery. If necessary, top up the battery with distilled water (if possible).



WARNING: BATTERY ACID IS AGGRESSIVE. RINSE OFF ANY ACID SPLASHES THOROUGHLY WITH LOTS OF WATER AND SEEK MEDICAL ADVICE IF NECESSARY.

-
3. Choose the type of quick connect cable you wish to use (clamps or 'O' rings) and connect then to the charger.
 4. Connect the charger to the mains power supply.

NOTE: The GREEN light will blink fast.

5. First connect the red charging cable to the positive pole (Red) of the battery.
6. If the battery is still in the vehicle, then connect the black charging cable to the bodywork of the vehicle away from the battery and fuel pipe.

NOTE: Under normal circumstances the negative battery pole is connected to the bodywork and you proceed as described above. In exceptional cases it is possible that the positive battery pole is connected to the bodywork (positive earthing). In this case, connect the black charger cable to the negative pole on the battery, then connect the red charger cable to the bodywork at a point away from the battery and fuel pipe.

7. If the battery is out of the vehicle, then connect the black charging cable to the negative pole (Black) of the battery.
8. The charger will automatically recognise the battery voltage (6V or 12V) and start charging.

NOTE: The GREEN light will blink slowly if charging correctly.

NOTE: The GREEN light will stay on constantly once the battery is fully charged.

NOTE: The RED light will blink fast if there is an error, short circuit or reverse polarity of the connectors. Turn off charger immediately and retry points 3 to 7 again.

NOTE: Charging may create dangerous explosive gas and therefore you should avoid spark formation and naked flames whilst the battery is charging. There is a risk of explosion. It is essential that you ventilate the area well.

CALCULATING THE CHARGING TIME

The charging time depends on the charge status of the battery. If the battery is fully discharged, the approximate charging time up to approximately 100% charged can be calculated using the following formula:

Charging time in hours = Battery capacity in Ah divided by Amp. (charging current)

The charging current should be 1/10 to 1/6 of the battery capacity.

BATTERY SIZE	APPROXIMATE TIME TO CHARGE TO 100%
4 Ah	4 Hours
10 Ah	10 Hours
30 Ah	30 Hours
60 Ah	60 Hours

TROUBLESHOOTING RED ERROR LED

The RED error LED will flash in the following cases:

1. If the voltage of the battery is less than 3.5V or more than 15V. The battery is either unsuitable for charging or is defective. It is also possible that other battery errors or faults can mean that the battery cannot be charged.
2. If the terminal clamps are connected to the battery terminals with the wrong polarity. The protection against swapped poles ensures that the battery and charger do not get damaged. Remove the charger from the battery and start the charging process from the beginning again.
3. If there is a short circuit between the two terminal clamps (the metal parts of the clamps come into contact with each other). The protection against short circuit ensures that the battery and charger do not get damaged.

FINISHING CHARGING THE BATTERY

1. Disconnect the charger from the mains power supply.
2. Disconnect the black charging cable from the bodywork or negative pole of the battery.

3. Disconnect the red charging cable from the positive pole of the battery.

NOTE: IMPORTANT, In case of positive earthing, first disconnect the red charging cable from the bodywork and then the black charging cable from the battery.

4. Screw or push the battery stoppers back into position (if there are any).

NOTE: If the mains plug is pulled out but the charger cables are still connected to the battery, the charger will draw off a small amount of electricity from the battery. We therefore recommend that you always completely remove the charger from the battery when not in use.

CARE & MAINTANENCE

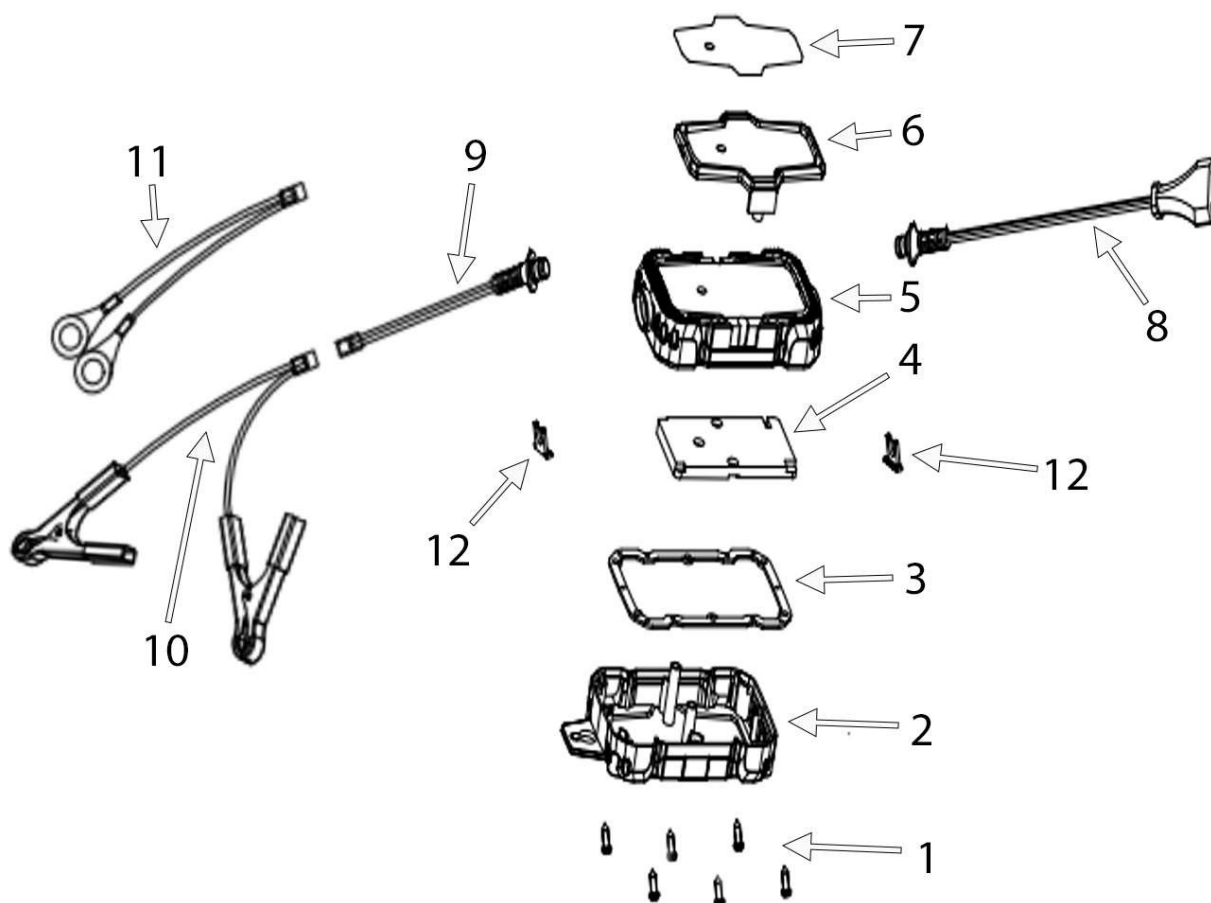
This battery charger requires minimal maintenance. As with any appliance or tool, a few common sense rules will prolong its working life.



WARNING: ALWAYS BE SURE THE CHARGER IS UNPLUGGED BEFORE PERFORMING ANY MAINTENANCE OR CLEANING. ANY REPAIRS MUST BE DONE BY A QUALIFIED SERVICE TECHNICIAN.

-
1. Wind up the leads when not in use. Examine the leads at regular intervals for damage and have them replaced if necessary.
 2. Clean the case and leads if necessary with a moist cloth and clean any corrosion from the clamps with a solution of water and baking soda.

PARTS DIAGRAM



PARTS LIST

No	DESCRIPTION	No	DESCRIPTION
1	Screw x 6	7	Face Label
2	Bottom Casing	8	Power Cable
3	Seal	9	Output Cable
4	Printed Circuit Board (PCT)	10	Quick Connect Crocodile Clamps
5	Top Casing	11	Quick Connect O Rings
6	Outer Casing	12	Cable Clip x 2

DECLARATION OF CONFORMITY - UKCA

**UK
CA**

Clarke[®]
INTERNATIONAL

Hemnall Street, Epping, Essex, CM16 4LG

DECLARATION OF CONFORMITY

This is an important document and should be retained.

We hereby declare that this product(s) complies with the following legislation:

2014/30/EU	Electromagnetic Compatibility Directive
2014/35/EU	Low Voltage Directive
2011/65/EU	Restriction of Hazardous Substances (RoHS) Directive

The following standards have been applied to the product(s):

IEC 60335-2-29:2016+AMD1:2019, EN IEC 55014-1:2021, EN IEC 55014-2:2021, IEC 62321-8:2017,
IEC 60335-1:2010+COR1:2010+COR2:2011+AMD1:2013+COR1:2014+AMD2:2016+COR1:2016,
EN 61000-3-3:2013+A1:2019+A2:2021, EN IEC 61000-3-2:2019+A1:2021

The technical documentation required to demonstrate that the product(s) meet(s) the requirement(s) of the aforementioned legislation has been compiled and is available for inspection by the relevant enforcement authorities.

The UKCA mark was first applied in: 2025

Product Description:	Battery Charger
Model Number(s):	BC1
Serial/Batch Number:	Refer to product/packaging label
Date of Issue:	11/03/2025

Signed:



J.A Clarke

Director

DECLARATION OF CONFORMITY - CE



Clarke[®]
INTERNATIONAL

Fitzwilliam Hall, Fitzwilliam Place, Dublin 2

DECLARATION OF CONFORMITY

This is an important document and should be retained.

We hereby declare that this product(s) complies with the following legislation:

2014/30/EU	<i>Electromagnetic Compatibility Directive</i>
2014/35/EU	<i>Low Voltage Directive</i>
2011/65/EU	<i>Restriction of Hazardous Substances (RoHS) Directive</i>

The following standards have been applied to the product(s):

*IEC 60335-2-29:2016+AMD1:2019, EN IEC 55014-1:2021, EN IEC 55014-2:2021, IEC 62321-8:2017,
IEC 60335-1:2010+COR1:2010+COR2:2011+AMD1:2013+COR1:2014+AMD2:2016+COR1:2016,
EN 61000-3-3:2013+A1:2019+A2:2021, EN IEC 61000-3-2:2019+A1:2021*

The technical documentation required to demonstrate that the product(s) meet(s) the requirement(s) of the aforementioned legislation has been compiled and is available for inspection by the relevant enforcement authorities.

The CE mark was first applied in: 2025

Product Description:	Battery Charger
Model Number(s):	BC1
Serial/Batch Number:	Refer to product/packaging label
Date of Issue:	11/03/2025

Signed:

J.A Clarke

Director

A SELECTION FROM THE VAST RANGE OF

Clarke®

QUALITY PRODUCTS



AIR COMPRESSORS
From DIY to industrial, Plus air tools, spray guns and accessories.

GENERATORS
Prime duty or emergency standby for business, home and leisure.

POWER WASHERS
Hot and cold, electric and engine driven - we have what you need

WELDERS
Mig, Arc, Tig and Spot. From DIY to auto/industrial.

METALWORKING
Drills, grinders and saws for DIY and professional use.

WOODWORKING
Saws, sanders, lathes, mortisers and dust extraction.

HYDRAULICS
Cranes, body repair kits, transmission jacks for all types of workshop use.

WATER PUMPS
Submersible, electric and engine driven for DIY, agriculture and industry.

POWER TOOLS
Angle grinders, cordless drill sets, saws and sanders.

STARTERS/CHARGERS
All sizes for car and commercial use.



PARTS & SERVICE:

0208 988 7400

Parts Enquiries
Parts@clarkeinternational.com

Servicing & Technical Enquiries
Service@clarkeinternational.com

SALES: UK 01992 565333 or Export 00 44 (0)1992 565335

Clarke® INTERNATIONAL Hemnall Street, Epping, Essex CM16 4LG
www.clarkeinternational.com